



# HSG19 Home StandBy Gaseous Generator

### Generator Set rating

120/240 Volts Single phase

PF = 1.0

Frequency 60Hz

### Single Phase Output

	LP	NG
Standby Power	19KW	17KW
Current	158/79A	142/71A
Prime Power	17KW	15KW
Current	142/71A	124/62A
Sound Level @ 23 ft. Unloaded		71 dBA

### AC Generation Equipment

is our business at GENMAC. Our AC power systems offer a first-rate solution to requirements for Reliable, High Quality Electrical Power for the Residential owner.

All units are:

- 100% full load tested
- Performance supported by prototype testing
- Capacitive Regulated Generator for exceptional motor starting capability and high reliability



### Product Features

#### System Reliability and Longevity

begin with design experience and integrity. GENMAC has been producing Generator Sets for over 20 years. The company is situated in the area world renown for automotive and electromechanical manufacturing. This has allowed us to assemble a staff of design and manufacturing personnel who are second to none. The

knowledge and experience in designing and manufacturing with state-of-the art power generation equipment is built into our complete line of generator sets.

#### Single Source Responsibility:

Product service, support and parts are available through the GENMAC network of distributors.

#### Accessories and Flexibility

are designed into GENMAC's generator sets at the factory level to meet residential application needs.

#### The GENMAC mission

To provide the world with safe, reliable, high quality power generation equipment to allow anyone in the world to realize their full potential.



# HSG19 Home StandBy Gaseous Generator

## Standard Equipment

- 4 Cycle Liquid cooled engine
- Battery Charging alternator
- Single stage dry type air cleaner
- Integral Muffler w/ rain cap
- Thermostatically controlled Coolant Heater
- 2 electronic over speed protection devices
- Electronic Fuel Shut off Valve
- Electronic speed control
- 12VDC engine electrical systems
- 12V starting motor
- Dirty Air filter switch
- Capacitive regulated brush less Alternator
- Tropical Treated Alternator
- Sound attenuated Outdoor Enclosure
- Steel base with vibration isolators between engine, generator and the base.
- Under Base stub up area for hidden wiring access
- Integral Control Box behind a locked door
- Circuit breakers located in the lockable Control Box
- Single connection area for main AC terminals and all control wiring
- On board Utility powered AC battery charger
- Utility Present Light
- Battery rack tie down bar and Cables
- In Base fuel inlet.
- In Base oil drain
- In Base Coolant drain
- All steel parts are powder paint coated and tropical treated
- Corrosion resistant hardware
- Interior light
- Microprocessor based, fully programmable auto start control panel with metering and security
  - Integral programmable ATS control logic built into System controller
  - Exercise without load capability for unattended operation
  - Digital read out control system with the following accessible standard displays:
    - Utility Voltage L-L
    - Generator Voltage L-L
    - Generator Frequency
    - Battery Voltage
    - Operating hours
  - Additional information available on the controller display are:
    - ATS switch position
    - Engine run / on
    - Generator run / on
    - Error in code detailed on the controller face
    - Test, Manual, Automatic and Reset buttons
    - Remote manual switching of ATS from the control panel
  - Shut down:
    - High engine temp
    - Low oil Pressure
    - Cranking Failure
    - Over speed
    - High voltage generator
    - Low voltage generator
    - Under frequency
- Warning:
  - High Battery Voltage
  - Low Battery Voltage
  - Dirty Air Filter
- Common alarm relay output
- Exceed programmable Maintenance hours warning error code
- Automatic test function

## Options:

- Complete remote control and operation by:
  - Direct PC interface able with cable and software
  - Modem capable for remote control over dedicated phone line
  - Wireless hook up to RS232 port Capable
- Remote Alarm Annunciator
- Automatic transfers switches for any application
- External Emergency Stop
- Will operate with Standard 2 wire ATS
- 2 Programmable Digital inputs for shut down or warning
- Capable of external start / stop operation
- Capable of single phase 110V operation
- Capable of operating more than one ATS
- Project engineering help available for "Specials"



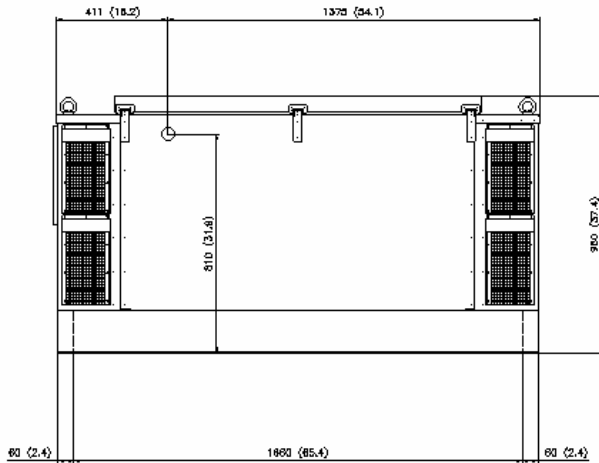
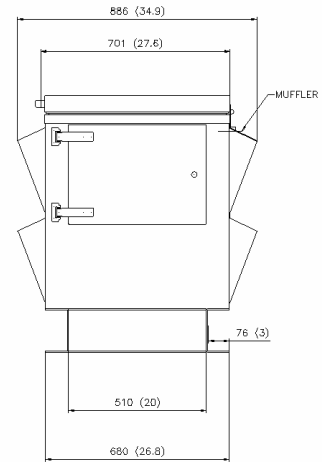
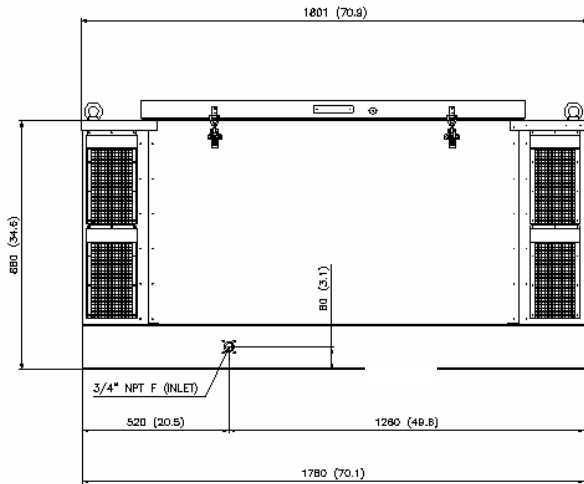
# HSG19 Home StandBy Gaseous Generator

## Technical Specifications Model HSG 19

Engine:		Generator	
Manufacturer	Tofas	Generator MFG.	Sincro
Model	SOHC 1600cc	Type	GK 2MBL
Intake System	Naturally Aspirated	Model	22kVA (240V – 60Hz)
Cylinders	4	Speed	3600 RPM
Displacement	1600cc	Rated Voltage	120/240, 60Hz
Bore and Stroke	86.4 X 67.4mm	Rated Power	22.0 kVA
Compression ratio	9.0:1	Voltage Accuracy	Approx. +/- 5%
HP NG	34HP @2400rpm	Motor Starting kVA (At 35% Dip, 100% voltage recovery)	41 SkVA
HP LP	38HP @ 2400rpm	Over speed RPM	4320
Valves	Single Overhead Cam	THD	Approximately 5%
Governor System	GAC Electronic	Protection	IP 33
Cooling system	Pressurized, Closed recovery	Cooling flow	9.2 Cubic Meters / min
Lubrication System	Pressurized Oil	<b>Insulation Class</b>	
Oil Capacity w/ Filter	4.4 Quarts	Stator	F
		Rotor	H
<b>Fuel Pressure requirements</b>			
Natural Gas and LPG	8 to 11 inches water column		
<b>Fuel inlet</b>	¾ inch NPT		
<b>Fuel Consumption at 100% load</b>			
Natural Gas	311 /Cubic feet per Hour		
Propane	3.7 /Gallons per Hour		
Cooling System Cap.	2.25 gal.		
<b>Generator Set</b>			
<b>Frequency Regulation</b>			
Steady state		0.25%	
<b>Nominal Sound Level</b>			
@ 23FT No Load		71dBA	
<b>Derating Factors:</b>			
For every 328 ft above Sea Level		2.0%	
For every 10 Deg. F above 68 Deg F		2.0%	
Dry Weight:		1,100 lbs.	
Basic footprint:		71 x 35 x 37.5 inches	



# HSG19 Home StandBy Gaseous Generator



Stub up area anywhere under  
the base inside the rails.

## Mechanical Layout



12355 S.W. 129 Court # 1

MIAMI, FL 33186

Tel: (305) 254-4545

Fax: (305) 254-4558

Toll free (877) 254-4541

Email: [genmacusa@genmac-group.com](mailto:genmacusa@genmac-group.com)

[www.genmac-group.com](http://www.genmac-group.com)

All Specifications are subject to change with out notice.  
Made in Italy

## Distributed By